



**Gold Client[®]
Solutions**

**Balance Recalculations
User Guide
8.6**



Copyright

© 2012-2019 Qlik Analytics (ISR) Ltd. All rights reserved.

No part of this document may be reproduced or transmitted in any form or for any purpose without the express permission of Attunity, Inc.

Qlik Analytics (ISR) Ltd. makes no warranties or representations with respect to the content hereof, and assumes no responsibility for errors in this document. Attunity shall not be liable for special, indirect, incidental, or consequential damages, including without limitation, lost revenues or lost profits which may result from the use of these materials. The information contained in this document is subject to change without notice.

Trademarks

Gold Client and the Gold Client logo are registered trademarks of Qlik Analytics (ISR) Ltd.

SAP, SAP NetWeaver, ABAP and other SAP products and services mentioned herein as well as their respective logos are trademarks or registered trademarks of SAP AG in Germany and in several other countries all over the world.

All other product and company names herein may be trademarks of their respective owners.

Table of Contents

Introduction

Security Details

Prerequisites

- *Add 'FI_RECONCILIATION_REPORTS' to the Application Settings (mconfig) table*

Enabling or Disabling the Balance Recalculation Utilities

How to Execute the Balance Recalculation Utilities

Important Points

Support Information

Introduction

The purpose of the Balance Recalculation utilities is to reconcile any balance-related deltas that may exist between the details and totals tables because of copying data to your Target system using Gold Client. The utilities resolve the deltas through a process of inserting records within the respective totals table of which the records that are inserted are a summation of the debit and credit amounts found within the details table. The scope of the insertions is based upon the user's inputs.

The tables involved with the various utilities are as follows:

New GL: Reads BKPF and FAGLFLEXA, and updates FAGLFLEXT

Classic GL: Reads BKPF and BSEG, and updates GLT0

Customer balances: Reads BSAD and BSID, and updates KNC1 and KNC3

Vendor balances: Reads BSAK and BSIK, and updates LFC1 and LFC3

Profit Center: Reads GLPCA and updates GLPCT

Consolidations: Reads ECMCA and updates ECMCT

GL Functional Areas: Reads GLFUNCA and updates GLFUNCT

Cost: Reads COEP, COEJ, and COOI, and updates COSP and COSS

Security Details

Additional security measures have been taken into account regarding the execution of the Balance Recalculation utilities:

- A safeguard exists that prevents the utilities from being executed in Production systems
- The utilities can be completely disabled within a given (non-prod) system so that no users are allowed to execute them
- The utilities have their own authorization activity (88) related to Gold Client's authorization object, ZGCSGCSGCS (Fig. 1.0); having this unique activity defined provides the flexibility to restrict the execution of these reports to a very limited set of users



Figure 1.0

Prerequisites

Before putting the Balance Recalculation utilities to use, a few important tasks must be completed by your Gold Client administrators; details on completing each task are listed below. If you intend to run the utilities in multiple systems such as DEV and QAS, then these tasks **must be completed within each of those systems**.

Add 'FI_RECONCILIATION_REPORTS' to the Application Settings (mconfig) table

Completing this task allows the Balance Recalculation utilities to be executed in the given system. If this setting is missing, or is present but set as inactive, then it is not possible to execute these programs within the given system.

1. Go to ZGOLD > Configuration
2. Within the Gold Client Setup Utility screen, open the Configuration folder and execute Application Settings (mconfig) (Fig. 2.0)

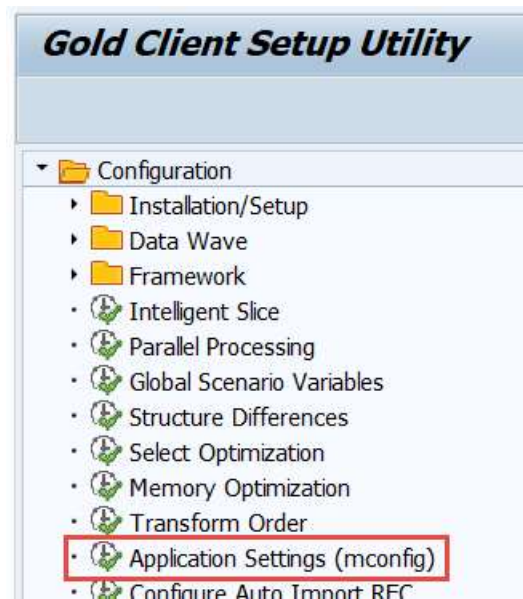


Figure 2.0

3. Toggle from display mode to change mode
4. Select the New Entries button located on the toolbar
5. Enter the value FI_RECONCILIATION_REPORTS and check the 'Active' indicator (Fig. 2.1)

Figure 2.1



6. Save your changes and exit

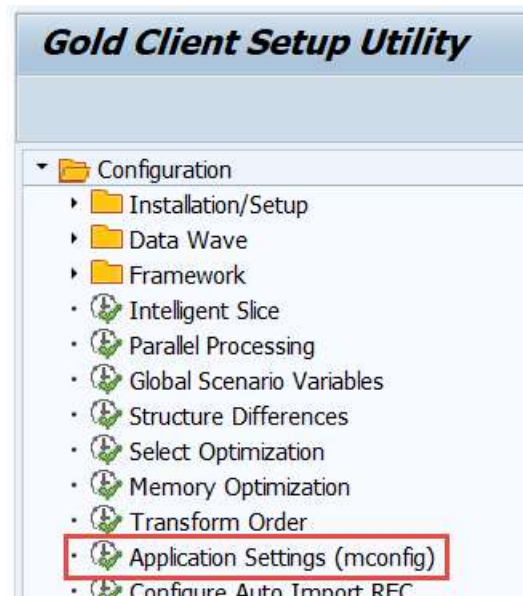
Enabling or Disabling the Balance Recalculation Utilities

As mentioned in the Security Details section, if you wish to disable the execution of the Balance Recalculation utilities in a particular system for **ALL** users - even those that have the specific access to run them - this can be done through a master control setting. For example, you may not want anyone to be able to run this report in your QAS system, but it's permitted in DEV. Follow the steps below to enable or disable the report execution as needed.

Only Gold Client administrators should have access to the most sensitive areas of Gold Client, thus they should be the only ones permitted to enable or disable the utilities.

1. Go to ZGOLD > Configuration
2. Within the Gold Client Setup Utility screen open the Configuration folder and execute Application Settings (mconfig) (Fig. 3.0)

Figure 3.0



3. Toggle from display mode to change mode
4. Locate the entry named 'FI_RECONCILIATION_REPORTS' and mark the setting accordingly (Fig. 3.1)
 - a. A check in the 'Active' box means that the utilities are enabled, and **CAN** be executed in the given system
 - b. Not having a check in the 'Active' box means that the utilities are disabled and **CANNOT** be executed in the given system (by any team member)

Figure 3.1

Miscellaneous Configuration	
Functionality	Active
FI_RECONCILIATION_REPORTS	<input checked="" type="checkbox"/>

5. This setting is client-independent; repeat this process in each (non-production) system as necessary

If the 'FI_RECONCILIATION_REPORTS' setting has been disabled and a user attempts to run any of the Balance Recalculation utilities, a message is displayed (Fig. 3.2). The user's only course of action is to exit the program.

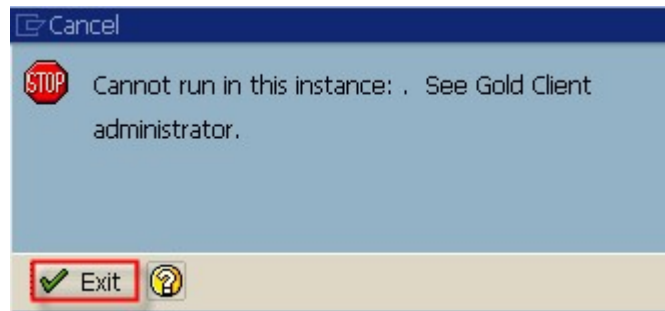


Figure 3.2

How to Execute the Balance Recalculation Utilities

1. To access these utilities, go to ZGOLD and select the Post Process function located within Data Echo (Fig. 4.0); next, open the Finance folder and select 'Balance Recalculations' (Fig. 4.1)

Figure 4.0

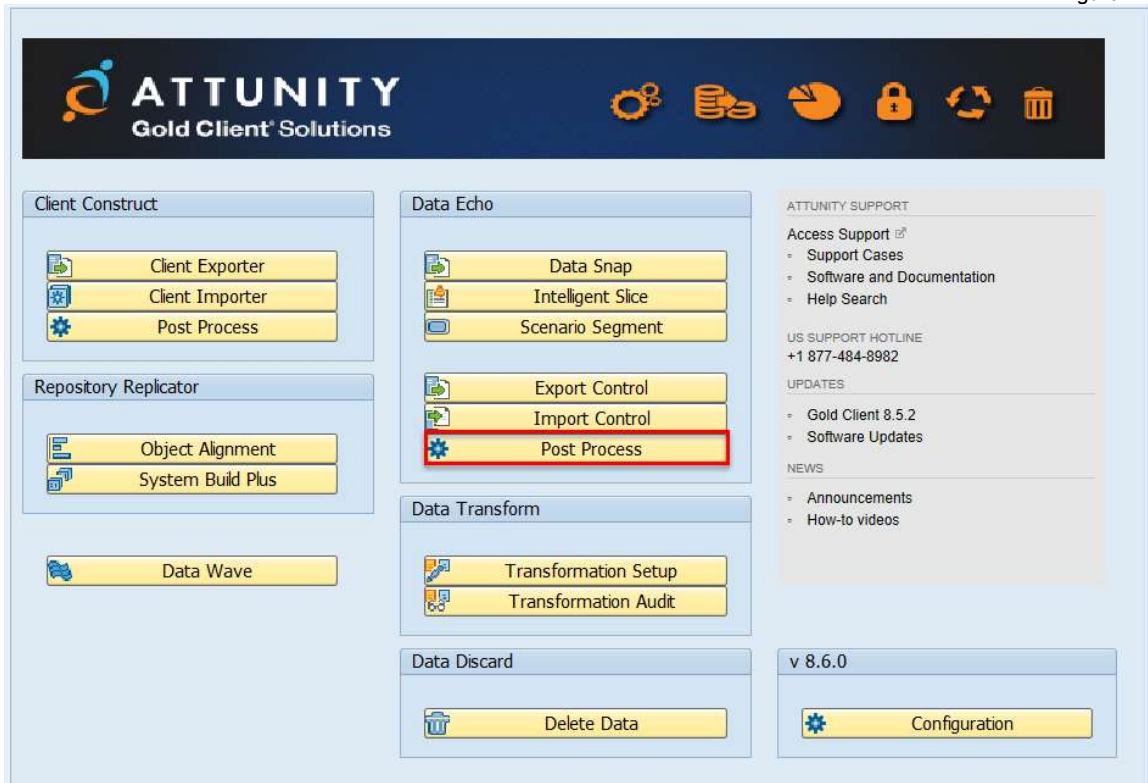
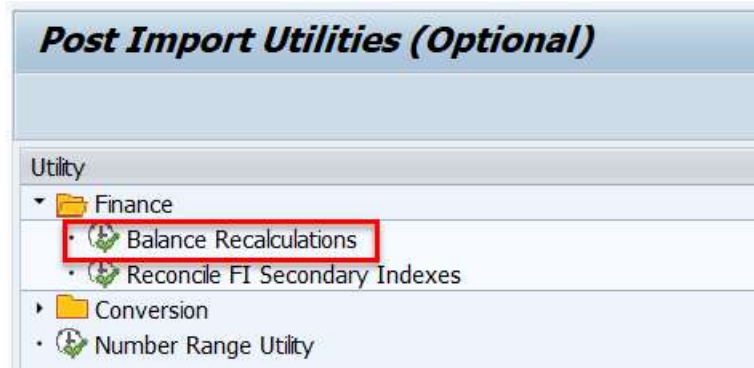
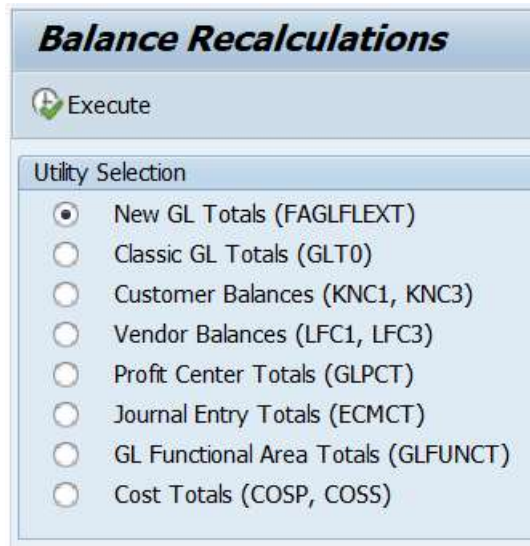


Figure 4.1



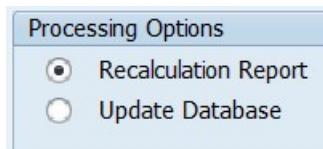
2. Select the radio button for the utility you want to run and select 'Execute' (Fig. 4.2)

Figure 4.2



3. Input values for all required fields, and for any optional fields as desired
 - a. The selection fields will vary from one utility to the next
4. The utility processing option by default is **Recalculation Report** which will not update the database (Fig. 4.3)
 - a. For report (simulation) mode select the Execute button
 - b. For update mode, select the **Update Database** radio button, and then the Execute button

Figure 4.3



5. If you choose update mode, a confirmation message will appear (Fig. 4.4)
 - a. Enter past the message to continue updating the database
 - b. Cancel the message if you want to stop the update process and return to the selection screen

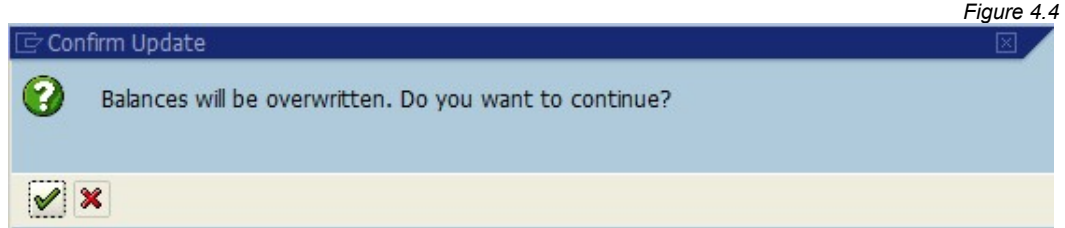


Figure 4.4

6. An example of the report outputs can be viewed below based on whether it was executed using the **Recalculation Report** option (Fig. 4.5), or when executed using the **Update Database** option (Fig. 4.6).

```

FI Reconciliation Report - "New" Flexible General Ledger
-----
BKPF records read           :      1,708
FAGLFLEXA records read      :      327
FAGLFLEXT records to process or report on:      6

Report mode: Report only - no database updates

End of Program.
    
```

Figure 4.5

```

FI Reconciliation Report - "New" Flexible General Ledger
-----
BKPF records read           :      1,708
FAGLFLEXA records read      :      327
FAGLFLEXT records to process or report on:      6

Report mode: Data base updated

End of Program.
    
```

Figure 4.6

7. If the report was executed with the **Update Database** setting, records in the relevant totals table should have been updated according to the user's inputs.

Important Points

1. Balances data may be out of sync as soon as additional transactional data is imported into the same client. If this is an issue, consider creating variants and running the balance recalculations using periodic background jobs.
2. Even after running the balance recalculations you may find that the cumulative balances are incorrect; in that case, consider the need to execute t-code F.07, F.16, or other SAP standard t-codes to carry the balances forward.

Support Information

Qlik Analytics (ISR) Ltd. can be contacted either by telephone or via email. Any support related issue regarding problems with or use of the Gold Client software and process can be reported for resolution.

If our offices are closed, or staff is unable to directly respond to a support request, we will respond within 24 hours of the initial call. Problems related to the export or import processing may require code enhancements. If a code enhancement or fix is required, resolution time may vary.

As per the maintenance agreement, any repairs or enhancements to the Gold Client software will immediately be deployed to all customers up-to-date with their maintenance contract. It is the choice of the customer as to if and when such enhancements are implemented. In addition, customers may request a planning session with Qlik to review changes in the software and how the changes might impact their environment.

We can also be contacted to discuss application or feasibility of using the Gold Client process to resolve a current challenge the project team faces. When this is required, a planning session can be scheduled in advance to ensure proper participation by both Qlik and the client.

Corporate Offices:

Attunity, Inc. – A Division of Qlik
211 South Gulph Road
Suite 500
King of Prussia, PA 19406
USA

Website:

<https://www.attunity.com/products/gold-client/>

Contact:

goldclient.support@qlik.com

1-877-484-8982 (Toll Free in the USA)